



Highlight Merchandiser® RHMC30T Hybrid™ Specs

Medium Temp Tall Reach-In Remote Display Cases

2-Door, 3-Door, 4-Door, and 5-Door Cases

Quick Specs

Energy Use (Per Door Avg Daily)*

With Condensate Removal: 3.7 kWh

Without Condensate Removal: 3.6 kWh

*Standard Package with R-404A Refrigerant

Merchandising (5-Door)

Facings: 73.5 ft²

Packout: 147 ft³ with 30" wide x 24" deep shelves

Features & Options

High Humidity

Control climate challenges with advanced humidity package.

CoolView® Doors

30" wide x 73" tall CoolView® Envision® Doors

LED Lighting

ChillBrite® 4000K LED Lighting

Additional Models

The Highlight® Hybrid™ medium temp lineup offers standard, and tall cases. The standard cases are available with 24" or 30" wide doors.

Applications



Beverage



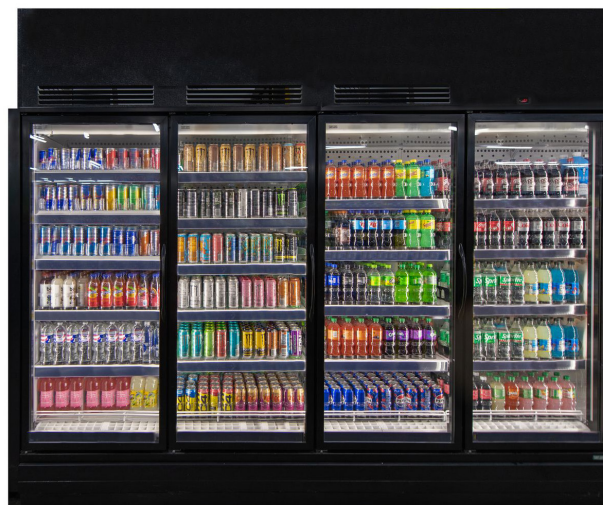
Dairy



Deli



Produce



Manuals and Instructions:
<https://www.zero-zone.com/rhmc-rhlc>



Contact Us:

800-247-4496

www.zero-zone.com

Specifications are subject to change without notice. All dimensions are nominal.
 Case designed to operate in an ambient temperature of 75°F and relative humidity of 55% or lower.



SS-130 Rev D • 9/26/2024

© 2024 Zero Zone, Inc.

Page 1 of 3





Standard Package

Refrigeration Data	R-404A Refrigerant				R-448A Refrigerant			
	2-Door	3-Door	4-Door	5-Door	2-Door	3-Door	4-Door	5-Door
Refrigerant Charge (lbs.) ¹	3.0	4.0	5.1	6.2	3.0	4.0	5.1	6.2
Zero Zone Condensing Unit #	69-10042	69-10221	69-10324	69-10324	69-9933	69-10222	69-10235	69-10237
Condensing Unit Crated Weight (lbs.)	61	70	70	70	61	70	70	120
Electrical & Energy Data ^{2,3,4}	With Condensate Removal System				With Condensate Removal System			
MOCP (amps) ^{5,7}	15	15	15	20	15	15	15	20
MCA (amps) ^{6,7}	7.8	8.6	14.3	16.2	7.8	8.6	14.3	16.2
Daily Energy Use (kWh)	7.6	12.6	13.8	18.0	7.1	11.7	13.0	16.9
Rejected Heat (Btu/h) ⁸	1,087	1,794	1,966	2,553	1,006	1,670	1,843	2,399
Electrical & Energy Data ^{2,3,4}	Without Condensate Removal System				Without Condensate Removal System			
MOCP (amps) ^{5,7}	15	15	15	15	15	15	15	15
MCA (amps) ^{6,7}	5.7	7.7	8.3	10.2	5.7	7.7	8.3	10.2
Daily Energy Use (kWh)	7.4	12.3	13.4	17.5	6.9	11.4	12.6	16.4
Rejected Heat (Btu/h) ⁸	1,058	1,751	1,909	2,481	978	1,627	1,786	2,328

High Humidity Package⁹

Refrigeration Data	2-Door	3-Door	4-Door	5-Door	2-Door	3-Door	4-Door	5-Door
	Refrigerant Charge (lbs.) ¹	3.0	4.0	5.1	6.2	3.0	4.0	5.1
Zero Zone Condensing Unit #	69-10324	69-10324	69-10045	69-10236	69-10222	69-10235	69-10237	69-10232
Condensing Unit Crated Weight (lbs.)	70	70	120	150	70	70	120	150
Electrical & Energy Data ^{2,3,4}	With Condensate Removal System				With Condensate Removal System			
MOCP (amps) ^{5,7}	15	20	20	30	15	20	20	20
MCA (amps) ^{6,7}	14.1	15.3	17.4	25.8	8.9	15.3	17.7	19.7
Daily Energy Use (kWh)	10.8	16.1	23.8	36.1	12.7	16.1	20.6	25.4
Rejected Heat (Btu/h) ⁸	1,541	2,283	3,381	5,132	1,805	2,283	2,927	3,616
Electrical & Energy Data ^{2,3,4}	Without Condensate Removal System				Without Condensate Removal System			
MOCP (amps) ^{5,7}	15	15	15	20	15	15	15	15
MCA (amps) ^{6,7}	8.0	9.3	11.7	19.8	7.7	9.3	11.7	13.7
Daily Energy Use (kWh)	10.6	15.8	23.4	35.6	12.5	15.8	20.2	24.9
Rejected Heat (Btu/h) ⁸	1,512	2,240	3,324	5,060	1,776	2,240	2,869	3,544

Physical Data

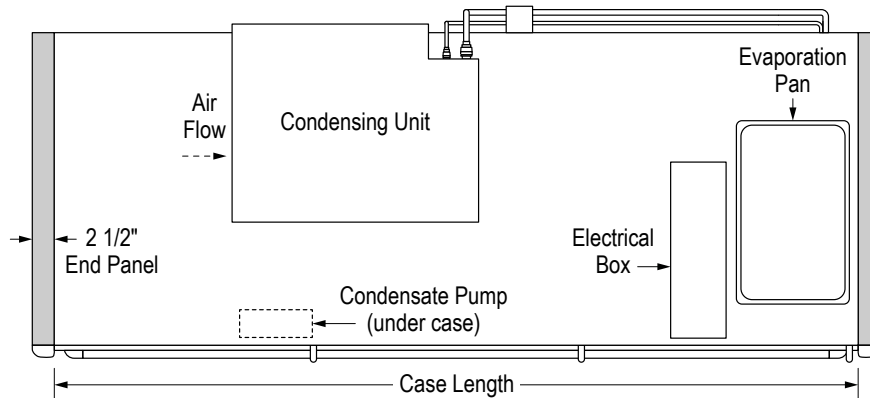
Case Calculations	2-Door	3-Door	4-Door	5-Door
Facings (ft. ²)	29.4	44.1	58.8	73.5
Packout (ft. ³) 24" Shelves	58.8	88.2	117.5	147.0
Weight (lbs.) ¹⁰	755	1,055	1,420	1,800

Notes:

1. Refrigerant charge includes combined condensing unit and case charges.
2. Data based on Zero Zone ChillBrite® 4190 LED lighting, Zero Zone CoolView® Envision® doors, and SSC electronic fan motors. See separate remote case spec sheets for more details.
3. 208V (four-wire) service; 115/208V-1PH-60Hz; red and black AC Line, white AC neutral, green Safety Ground. Buck/boost transformer available for low voltage conditions.
4. Optional main service disconnect is available upon request.
5. MOCP (Maximum Over-Current Protection) is the maximum circuit breaker size that can be used to properly protect the product.
6. MCA (Minimum Circuit Ampacity) is used to calculate the minimum wire size. This is selected so wires will not overheat in typical operating conditions and prevent nuisance circuit breaker trips.
7. Zero Zone recommends that a circuit breaker size should be larger than the MCA, but smaller than or equal to the MOCP. For example, if the equipment is listed having an MCA of 36.8 amps and an MOCP of 45 amps, a 40 amp or 45 amp circuit breaker would be acceptable.
8. Adequate ventilation must be provided to dissipate rejected heat from the top of the unit for proper performance. Clearance of less than 30" above the top of the shroud to the ceiling requires special design considerations. See Zero Zone Hybrid™ Installation & Operation Manual for specific details.
9. High-Humidity Package includes high-wattage anti-sweat components that prevent condensation on doors and components in ambient conditions up to 85°F and relative humidity of 70%. An anti-sweat controller is required for DOE compliance.
10. Does not include weight of condensing unit. Weights include 2 end panels at 60 lbs. per pair.

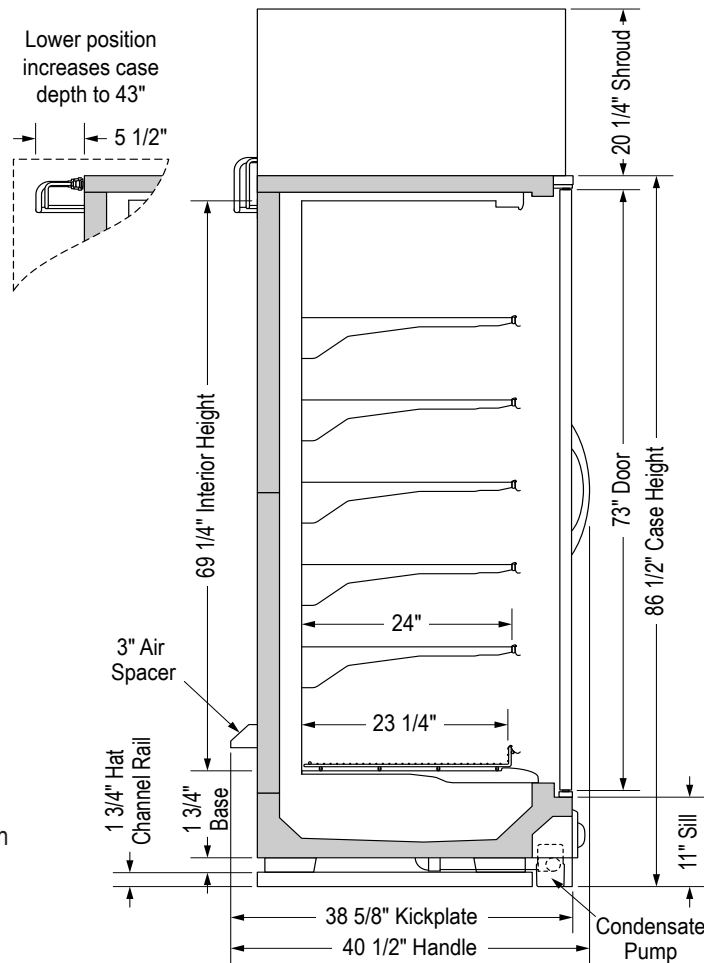


RHMC30T Hybrid™ Top View



Measurements	2-Door	3-Door	4-Door	5-Door
Case Length (in.) without End Panels	60 7/8	91 3/8	121 3/4	152 1/4
Case Length (in.) with End Panels	65 7/8	96 3/8	126 3/4	157 1/4

RHMC30T Hybrid™ Top View



Optional base configurations are available to fit case through doorways as low as 80". Consult the factory for details.