



# Hybrid™ Specifications

## Medium and Low Temp Hybrid Reach-Ins: RMCC24 & RMZC24

**Note:** Effective 1/1/12, all Zero Zone display cases manufactured for shipment within the U.S. meet or exceed current DOE energy requirements.

### PHYSICAL DATA

	Medium Temp		Low Temp	
	2RMCC24	3RMCC24	2RMZC24	3RMZC24
Facings (ft. <sup>2</sup> )	21.8	32.5	21.8	32.5
Packout (ft. <sup>3</sup> )	39.9	59.1	39.9	59.1
Shelf Depth (in.)	22	22	22	22
Weight (lbs.)*	567	820	567	820

\* Does not include weight of condensing unit. Weights include 2 end panels at 54 lbs. per pair.

### ELECTRICAL DATA <sup>1,2</sup>

**OptiMax Pro24 LED Lighting, Anthony ELM / ELM-HG Doors <sup>7</sup>, SSC Fan Motors w/ Cond Evap System <sup>4</sup>**

MOCP (amps) <sup>3</sup>	15	15	25	30
MCA (amps)	8.4	9.4	20.3	24.0

### ENERGY DATA

Daily Energy Use (kWh)	9.5	13.7	26.5	39.5
Rejected Heat (Btuh) <sup>4</sup>	1,354	1,950	3,766	5,620

### R-404A CHARGE

R-404A Charge (lbs.) <sup>5</sup>	5.0	5.0	5.3	5.9
-----------------------------------	-----	-----	-----	-----

### REFRIGERATION

ZZ Condensing Unit No.	69-9634	69-9634	69-9679	69-9680
Crated Weight (lbs.)	100	100	150	180

### ELECTRICAL DATA <sup>1,2</sup>

**OptiMax Pro24 LED Lighting, Anthony ELM / ELM-HG Doors <sup>7</sup>, SSC Fan Motors w/o Cond Evap System <sup>4</sup>**

MOCP (amps) <sup>3</sup>	15	15	25	30
MCA (amps)	8.3	8.3	18.0	23.3

### ENERGY DATA

Daily Energy Use (kWh)	9.3	13.4	26.1	38.9
Rejected Heat (Btuh) <sup>4</sup>	1,326	1,907	3,709	5,534

### R-404A CHARGE

R-404A Charge (lbs.) <sup>5</sup>	5.0	5.0	5.3	5.9
-----------------------------------	-----	-----	-----	-----

### REFRIGERATION

ZZ Condensing Unit No.	69-9634	69-9634	69-9679	69-9680
Crated Weight (lbs.)	100	100	150	180

#### Notes:

- 208V 4-wire service; 115/208V-1PH-60HZ; red & black power, white neutral, green ground. Buck/boost transformer available for low voltage conditions.
- Main service disconnect is not provided.
- MOCP = Maximum over-current protection.
- Adequate ventilation must be provided to dissipate rejected heat from the top of the unit for proper performance. Clearance of less than 30" above the top of the shroud to the ceiling requires special design considerations. See Zero Zone Hybrid Installation and Operation Manual for specific details.
- Refrigerant charge includes combined condensing unit and case charges.
- See separate reach-in case spec sheets for additional details: RMCC24, RMZC24.
- ELM with heated glass doors require the use of a 65+ controller.

#### Factory Installed Hybrid™ Features:

- Refrigeration piping with quick connect couplings and refrigerant charge.
- Pre-wired and labeled for easy connection.
- Electronic control includes: time clock, temperature and defrost vcontrol, visual and audible temperature alarm, and network communication capability.

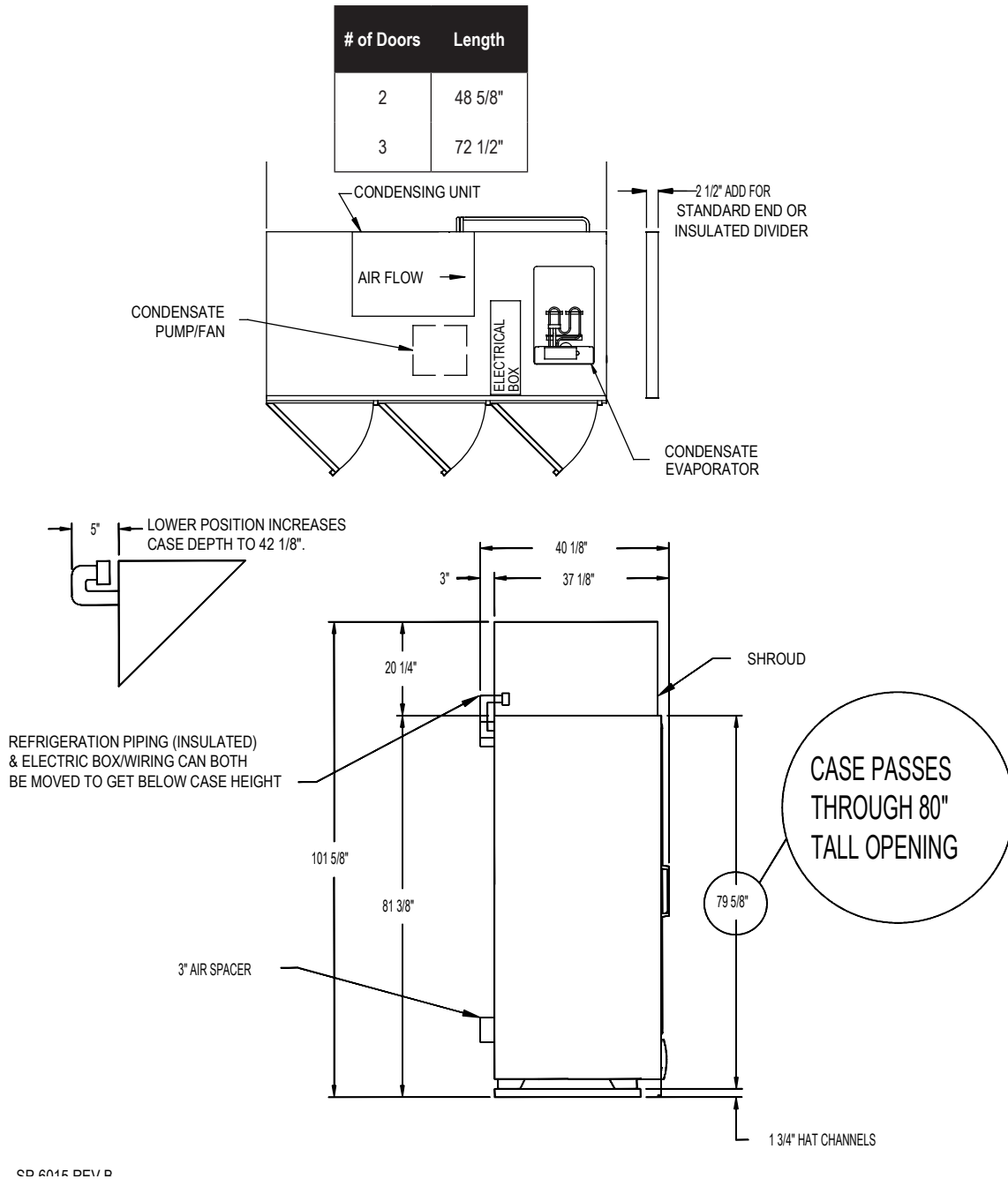
#### Field Installed Hybrid™ Features:

- 20 1/4" tall aluminum shroud (front and sides standard, rear optional). Consult factory for other options.
- Condensing unit with quick connect threaded couplings.
- Condensate collection and removal system: collection pan, pump, float switch, condensate dissipation pan with heater element, and connecting tubing.



# Hybrid™ Specifications

Medium and Low Temp Hybrid Reach-Ins: **RMCC24 & RMZC24**



SD 6016 REV D

10/27/15

Specifications are subject to change without notice.  
Case designed to operate in an ambient temperature of 75°F and relative humidity of 55% or lower.



Zero Zone, Inc. | 110 N Oakridge Drive | North Prairie, WI 53153-9792  
Toll Free: 800-247-4496 | Fax: 262-392-6450  
Zero-Zone.com

